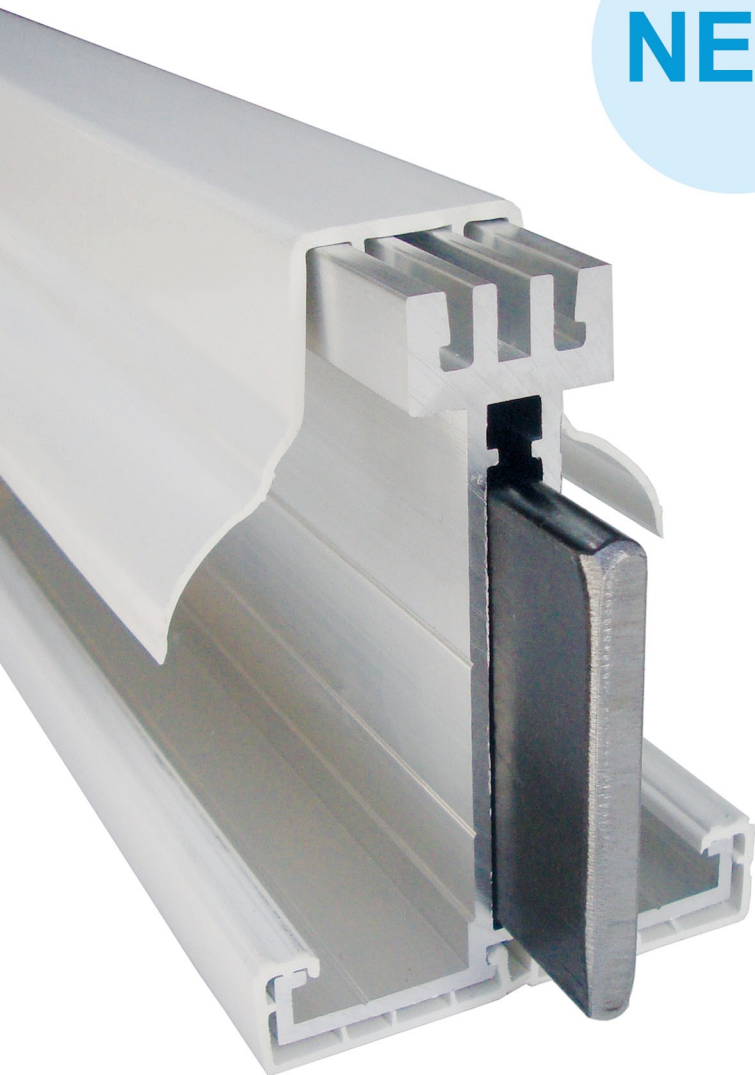


# ***TITAN Lean To Roof Kit***

*Strong enough to span  
5m unsupported!\**

**NEW**



## Heavy Duty Structural Roofing System

- Glazing bars with built in steel reinforcing bar
- Range of sizes with choice of glazing materials
- Designed for the professional builder
- Available in 5 different PVC colour options

# TITAN Lean To Roof Kit

Strong enough to span 5m unsupported!\*

- A roof kit with a 5m unsupported Span @ 500mm Bar Centres\*
- Heavy duty glazing bars with built in steel reinforcing bar
- Bars are supplied oversize at 5.5m length to give you the flexibility to vary the roof pitch to suit specific site requirements
- Variable Pitch Eaves Beam and Wall Plate capable of pitches between 5° and 25°
- Choice of 35mm Multiwall Polycarbonate or 25mm Glass (both Standard and Activ Blue, Self Cleaning)
- Top caps available in 5 different PVC colour options
- Compatible with the New Dawn aluminium gutter system
- Can be supplied with Aluminium Top Capping in a range of different colours
- The Titan Roof Kit is delivered free to your normal place of business.\*\*



#### Available Lengths

Glazing	Max. Span	3.5m	4.0m	4.5m	5.0m	5.5m	6.0m	6.5m	7.0m
35mm Polycarbonate	4950mm	✓	✓	✓	✓	✓	✓	✓	✓
25mm Standard Glass	3350mm	✓	✓	✓	✓	✓	✓	✓	✓
Activ Blue Self Cleaning	3350mm	✓	✓	✓	✓	✓	✓	✓	✓

(Spans are based upon a loading of 0.6kN/m<sup>2</sup>)

\* Maximum span of glazing bar with 35mm Polycarbonate – 4950mm @ 500mm centres. (Horizontal distance from the wall to the inside of the Ring Beam)

\*\* Deliveries to site will carry an additional charge.

Please contact us for more details:

Tel: 01536 446980  
 Fax: 01536 446981  
 Email: [sales@livingspaceltd.co.uk](mailto:sales@livingspaceltd.co.uk)  
 Web: [www.livingspaceltd.co.uk](http://www.livingspaceltd.co.uk)

livingspace  
 (UK) Limited

Living Space (UK) Ltd, 12a Earlstrees Road, Earlstrees Industrial Estate, Corby, Northants, NN17 4AZ